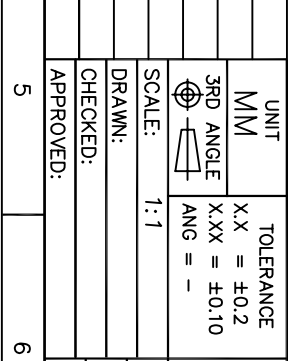
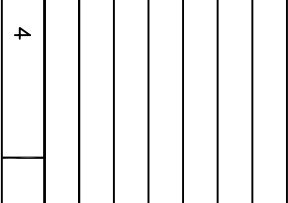
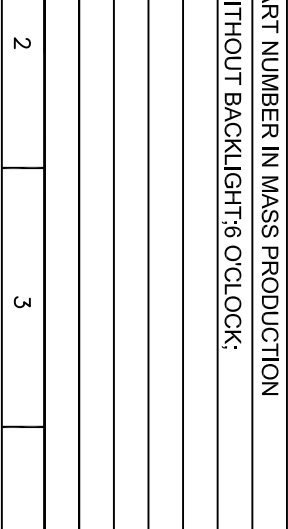


14	DB7
13	DB6
12	DB5
11	DB4
10	DB3
9	DB2
8	DB1
7	DB0
6	E
5	R/W
4	RS
3	VO
2	VDD(5V)
1	VSS
PIN SYMBOL	



1	2	3	4	5	6	7	8
THE PART NUMBER IN MASS PRODUCTION							
1.Y-G.STN,REFLECTIVE LCD;WITHOUT BACKLIGHT;6 O'CLOCK;							
2.--							
3.--							
4.--							
5.--							
6.--							
1							
2							
3							
4							
5							
6							
7							
8							

ITEM	T1	T2
BACKLIGHT	-	-
WITHOUT BL	5.2	8.2

ITEM	SELECTABLE CONTENTS
DISPLAY MODE	STN YELLOW MODE STN GRAY MODE STN BLUE MODE FSTN
POLARIZER TYPE	REFLECTIVE TRANSPARENT TRANSMISSIVE, POSITIVE TRANSMISSIVE, NEGATIVE
VIEWING DIRECTION	6 O'CLOCK 12 O'CLOCK WHITE Y-G RED GREEN BLUE AMBER TRI-COLOR
TEMPERATURE RANGE	STANDARD TEMPERATURE WIDE TEMPERATURE
CHARACTER PATTERNS	ENGLISH-JAPANESE FONTS ENGLISH-EUROPEAN FONTS ENGLISH-RUSSIAN FONTS CYRILLIC FONTS HEBREW FONTS
OPERATING VOLTAGE	5V
LCD DRIVING VOLTAGE	4.5V
LCD DRIVE METHOD	1/16 DUTY 1/5 BIAS
LCD DRIVE IC	SPLC780D-001 OR EQUIV

NOTE:

1. The operating voltage can be driven by 3.3V which is selectable.

DISPLAYTRONIC

XIAMEN ZETTLER ELECTRONICS CO., LTD.

TITLE: LCM

MODEL NO: ACM0802A SERIES

PART NO:

SCALE: 1:1

3RD ANGLE

UNIT: MM

TOLERANCE: X.X = ±0.2, X.XX = ±0.10, ANG = -

DRAWN: _____

CHECKED: _____

APPROVED: _____

REV A

SH NO 1/1