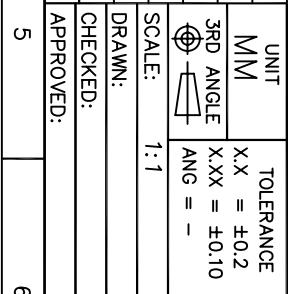
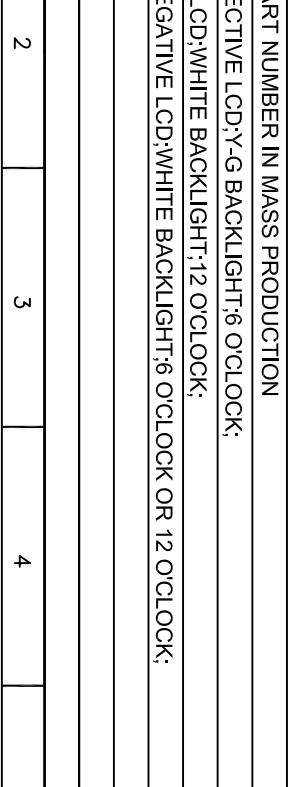


16	BL-
15	BL+
14	DB7
13	DB6
12	DB5
11	DB4
10	DB3
9	DB2
8	DB1
7	DB0
6	E
5	R/W
4	RS
3	VO
2	VDD(SV)
1	VSS
	PIN SYMBOL

THE PART NUMBER IN MASS PRODUCTION

1.GRAY OR Y-G STN. REFLECTIVE LCD;Y-G BACKLIGHT;6 O'CLOCK;
 2.GRAY STN. REFLECTIVE LCD;WHITE BACKLIGHT;12 O'CLOCK;
 3.BLUE STN. TRANSMISSIVE NEGATIVE LCD;WHITE BACKLIGHT;6 O'CLOCK OR 12 O'CLOCK;
 4.--
 5.--
 6.--



UNIT	TOLERANCE
MM	X.X = ±0.2
3RD ANGLE	X.XX = ±0.10
SCALE:	ANG = -
1:1	
DISPLAYTRONIC	
XIAMEN ZETTLER ELECTRONICS CO., LTD.	
TITLE:	LCM
MODEL NO:	ACM1602E SERIES
PART NO:	
DRAWN:	REV A
CHECKED:	SH NO 1/1
APPROVED:	

ITEM	SELECTABLE CONTENTS
DISPLAY MODE	STN YELLOW MODE STN GRAY MODE STN BLUE MODE FSTN
POLARIZER TYPE	REFLECTIVE TRANSPARENT TRANSMISSIVE, POSITIVE TRANSMISSIVE, NEGATIVE
VIEWING DIRECTION	6 O'CLOCK 12 O'CLOCK WHITE Y-G RED GREEN AMBER TRI-COLOR
LED BACKLIGHT	STANDARD TEMPERATURE WIDE TEMPERATURE
TEMPERATURE RANGE	ENGLISH-JAPANESE FONTS ENGLISH-EUROPEAN FONTS ENGLISH-RUSSIAN FONTS CYRILLIC FONTS HEBREW FONTS
CHARACTER PATTERNS	OPERATING VOLTAGE: 5V LCD DRIVING VOLTAGE: 4.5V LCD DRIVE METHOD: 1/16 DUTY 1/5 BIAS LCD DRIVE IC: SPLC780D-001 OR EQUIV
OPERATING VOLTAGE	NOTE: 1. The voltage of backlight is depended on the backlight color and the value of current-limiting resistance. 2. The operating voltage can be driven by 3.3v which is selectable.