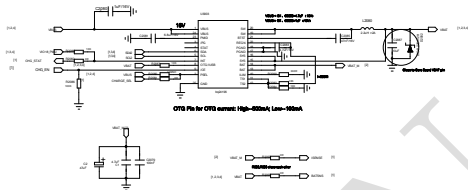


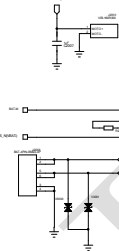
DRAWN BY	PROJECT	TITLE
		TV2
CHECKED BY	SIZE	VER
	A1	<V1.00>
	SHEET	<DATE HERE>
	1 of 4	

Charger



Motor

VIBR_PMU.2.8V

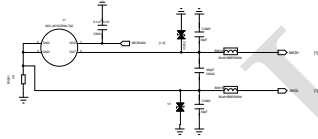


Battery

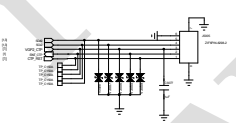
MP Test Points



Main MIC

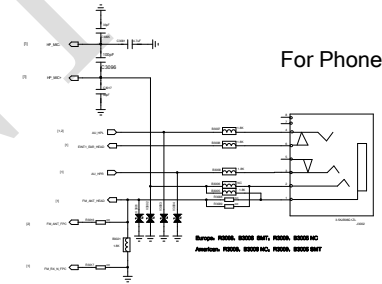


CTP

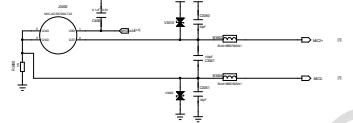


Headset

For Phone

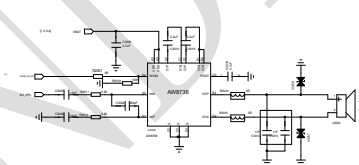


Sub MIC



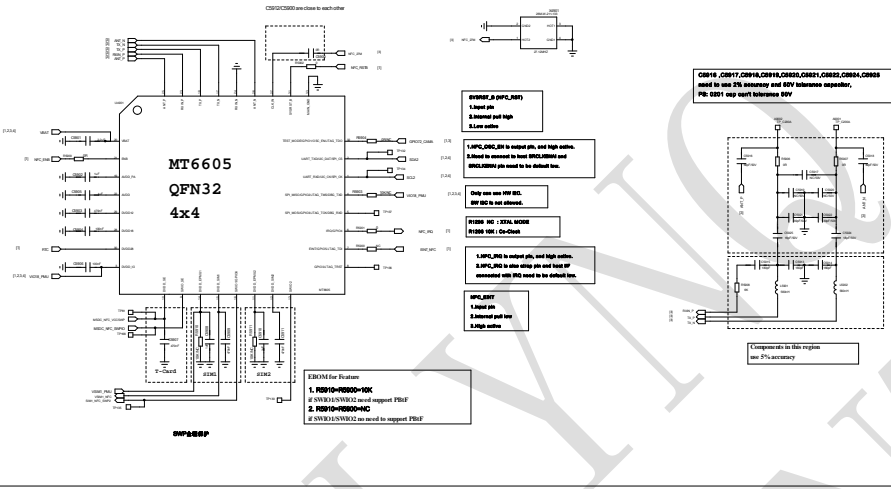
Speaker

Q44 = 200K(1.5K)R44
R44 = 10K(10K)R44
R44 = 10K(10K)R44
R44 = 10K(10K)R44

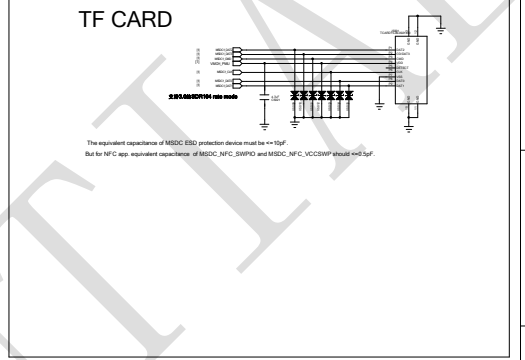


DRAWN BY	PROJECT	TITLE
CHECKED BY	SIZE A1	VER <V1.00>
	SHEET 2 of 4	<DATE HERE>

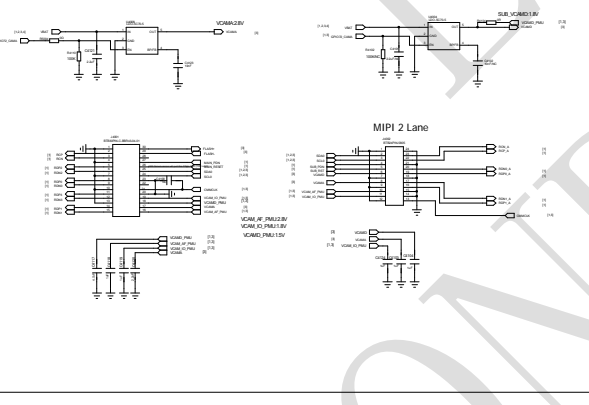
NFC



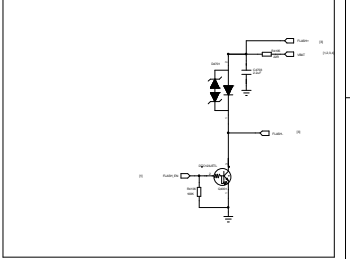
TF CARD



CAM AVDD

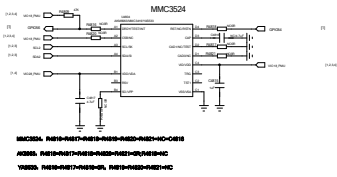


Flash LED



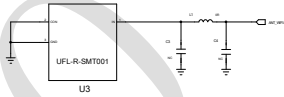
DRAWN BY	PROJECT	TITLE
		TV2
CHECKED BY	SIZE	VER
	A1	<V1.00>
	SHEET	<DATE HERE>
	3 of 4	

M-Sensor

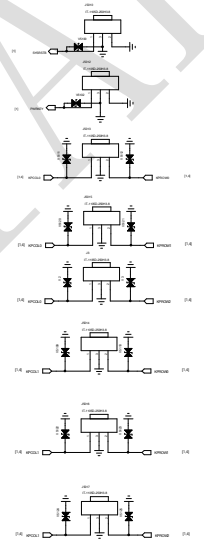


2.4/G/WIFI/BT ANT

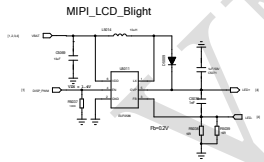
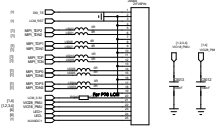
<Critical!>
 WIFI&GPS PCB loss is higher.
 RF trace must kept short <10mm and 50-0hm
 No layer transition



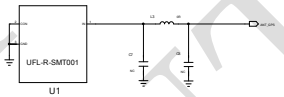
Matrix Key



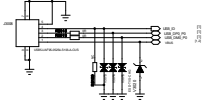
MIPI_LCD



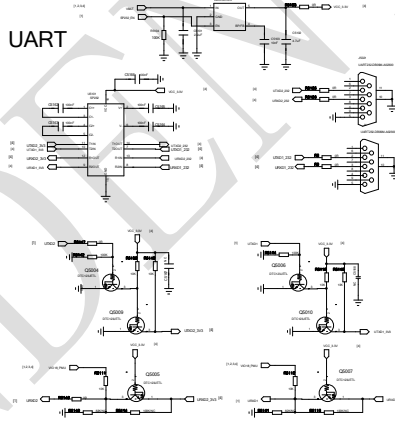
GPS ANT



5Pin USB



UART



DRAWN BY	PROJECT	TITLE
CHECKED BY	SIZE A1	VER <V1.00>
	SHEET 4 of 4	<DATE HERE>